

Lower Thames Crossing

6.2 Environmental Statement Figures Figure 7.19 - Photomontages - Winter Year 1 and Summer Year 15 (2 of 4)

(Tracked changes version)

APFP Regulation 5(2)(a)

Infrastructure Planning (Applications:
Prescribed Forms and Procedure)
Regulations 2009

Volume 6

DATE: July 2023
DEADLINE: 1

Planning Inspectorate Scheme Ref: TR010032
Application Document Ref: TR010032/APP/6.2

VERSION: 2.0

Lower Thames Crossing

Figure 7.19: Photomontages - Winter Year 1 and Summer Year 15 (2 of 4)

List of contents

	Page number
1 Photomontages	1
1.1 Introduction.....	1
1.2 Schedule of Representative Viewpoints included in this application document	1

1 Photomontages

1.1 Introduction

- 1.1.1 For each Representative Viewpoint, the following photography and photomontage views have been provided:
- Baseline photography - Winter
 - Corresponding photomontage – Year 1 (opening year)
 - Baseline photography – Summer
 - Corresponding photomontage – Year 15 (design year)

1.2 Schedule of Representative Viewpoints included in this application document

- 1.2.1 Baseline photography and photomontages have been included for the following Representative Viewpoints within this part of Figure 7.19:

Part Two of Figure 7.19: South of the River Thames

- S-33 - View from intersection of footpaths NG7, NG8 and NG9, on northern edge of Southern Valley Golf Club course
- S-38b - View from Saxon Shore Way Long Distance Path/footpath NS138 at intersection with bridleway NS318 adjacent to Shornemead Fort

Deleted: <#>“(CH)” references in Representative Viewpoint numbers denote where a viewpoint has also been prepared to support Chapter 6 Cultural heritage (Application Document 6.1).¶
S-25 - View from footpath NS167 at the western edge of Thong village¶
S-28 and S-(CH)01 - View from footpath NS169 adjacent to Gravesend urban edge¶
S-30 - View from Thong Lane on the eastern urban edge of Gravesend (Riverview Park)¶
S-31 - View from footpath NG8 located within Southern Valley Golf Club at the urban edge of Gravesend¶



P01	S8	05/08/2022	First Issued	BB	HP	SK
Rev	Status	Rev. Date	Purpose of revision	Drawn	Chck'd	Apprv'd

For location see Figure 7.16 - Visual Effects Drawing with Representative Viewpoint and Photomontage Locations

Camera: Canon EOS 6D MkII
 Lens: Canon EF 50mm f/1.8 STM
 Equipment: Manfrotto MA 454 Micro Positioning Plate
 Manfrotto SBH-100 Ball Head

Winter Viewpoint: S-33
 Date and Time: 14/04/2022 09:06

Visualisation Type: Type 3
 Projection Type: Cylindrical
 Enlargement Factor: 1.5
 Horizontal FOV: 56.5°

FL, Max Aperture: 50mm, 1.75
 Tripod Height: 1.5m
 Viewpoint Ground Height: 48.4m AOD
 Viewpoint Grid Reference: 568011E, 172014N

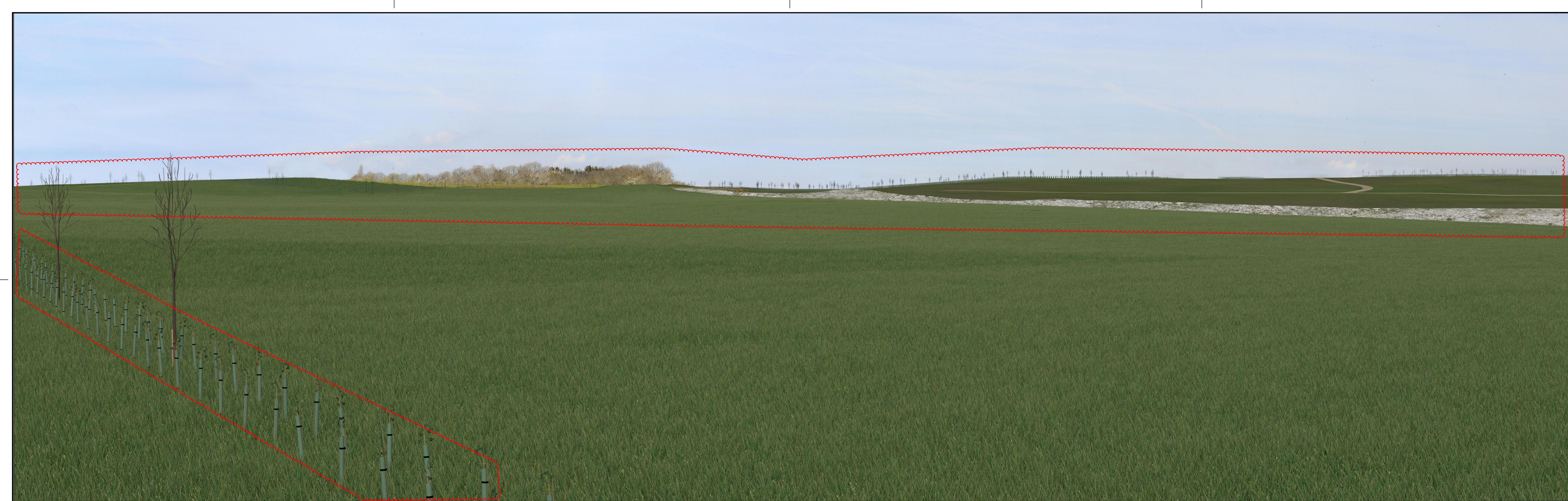
Distance to Order Limits: 0m
 View Direction (Centre of View): NW
 GPS Accuracy: 5m



LOWER THAMES CROSSING
 5th Floor Beaufort House
 15 St Botolph Street
 London EC3A 7DT

Project: LOWER THAMES CROSSING
 Drawing title: Figure 7.19
 Baseline Photography - Viewpoint S-33
 Winter Year 1
 Sheet 1 of 4

Drawn	BB	Date - 05/08/2022	Status	S8	Revision	P01
Checked	HP	Date - 05/08/2022	Application Document No. TR010032/APP/6.2			
Approved	SK	Date - 05/08/2022	Drawing number			
HE540039-CJV-ELS-SZP_ZZ000000_Z-DR-LV-00319A						



P02.1	S9	14/07/2023	Deadline 1	BB	HP	BF
P01	S8	05/08/2022	First Issued	BB	HP	SK
Rev	Status	Rev. Date	Purpose of revision	Drawn	Chck'd	Apprv'd

For location see Figure 7.16 - Visual Effects Drawing with Representative Viewpoint and Photomontage Locations

Camera: Canon EOS 6D MkII
 Lens: Canon EF 50mm f/1.8 STM
 Equipment: Manfrotto MA 454 Micro Positioning Plate
 Manfrotto SBH-100 Ball Head

Winter Viewpoint:
 Date and Time: S-33
 14/04/2022 09:06

Visualisation Type: Type 3
 Projection Type: Cylindrical
 Enlargement Factor: 1.5
 Horizontal FOV: 56.5°

FL, Max Aperture: 50mm, 1.75
 Tripod Height: 1.5m
 Viewpoint Ground Height: 48.4m AOD
 Viewpoint Grid Reference: 568011E, 172014N

Distance to Order Limits: 0m
 View Direction (Centre of View): NW
 GPS Accuracy: 5m



LOWER THAMES CROSSING
 5th Floor Beaufort House
 15 St Botolph Street
 London EC3A 7DT

Project: LOWER THAMES CROSSING
 Drawing title: Figure 7.19
 Photomontage - Viewpoint S-33
 Winter Year 1
 Sheet 1 of 4

Drawn	BB	Date - 14/07/2023	Status	Revision
Checked	HP	Date - 14/07/2023	S9	P02.1
Approved	BF	Date - 14/07/2023	Application Document No. TR010032/APP/6.2	
Drawing number HE540039-CJV-ELS-SZP_ZZ000000_Z-DR-LV-00319				



Rev	Status	Rev. Date	Purpose of revision	Drawn	Chck'd	Apprv'd
P01	S8	05/08/2022	First Issued	BB	HP	SK

For location see Figure 7.16 - Visual Effects Drawing with Representative Viewpoint and Photomontage Locations

Camera: Canon EOS 6D MkII
 Lens: Canon EF 50mm f/1.8 STM
 Equipment: Manfrotto MA 454 Micro Positioning Plate
 Manfrotto SBH-100 Ball Head

Winter Viewpoint:
 Date and Time: S-33
 14/04/2022 09:06

Visualisation Type: Type 3
 Projection Type: Cylindrical
 Enlargement Factor: 1.5
 Horizontal FOV: 56.5°

FL, Max Aperture: 50mm, 1.75
 Tripod Height: 1.5m
 Viewpoint Ground Height: 48.4m AOD
 Viewpoint Grid Reference: 568011E, 172014N

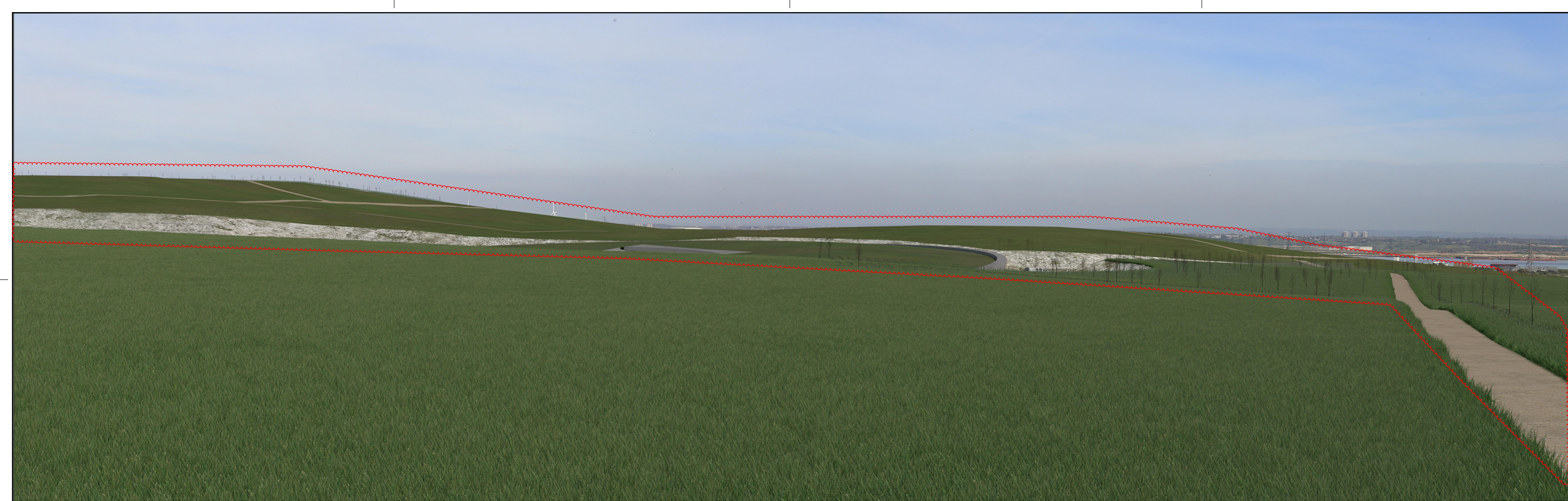
Distance to Order Limits: 0m
 View Direction (Centre of View): NW
 GPS Accuracy: 5m



LOWER THAMES CROSSING
 5th Floor Beaufort House
 15 St Botolph Street
 London EC3A 7DT

Project: LOWER THAMES CROSSING
 Drawing title: Figure 7.19
 Baseline Photography - Viewpoint S-33
 Winter Year 1
 Sheet 2 of 4

Drawn	BB	Date - 05/08/2022	Status	S8	Revision	P01
Checked	HP	Date - 05/08/2022	Application Document No. TR010032/APP/6.2			
Approved	SK	Date - 05/08/2022	Drawing number			
HE540039-CJV-ELS-SZP_ZZ000000_Z-DR-LV-00320A						



P02.1	S9	14/07/2023	Deadline 1	BB	HP	BF
P01	S8	05/08/2022	First Issued	BB	HP	SK
Rev	Status	Rev. Date	Purpose of revision	Drawn	Chck'd	Apprv'd

For location see Figure 7.16 - Visual Effects Drawing with Representative Viewpoint and Photomontage Locations

Camera: Canon EOS 6D MkII
 Lens: Canon EF 50mm f/1.8 STM
 Equipment: Manfrotto MA 454 Micro Positioning Plate
 Manfrotto SBH-100 Ball Head

Winter Viewpoint:
 Date and Time: S-33
 14/04/2022 09:06

Visualisation Type: Type 3
 Projection Type: Cylindrical
 Enlargement Factor: 1.5
 Horizontal FOV: 56.5°

FL, Max Aperture: 50mm, 1.75
 Tripod Height: 1.5m
 Viewpoint Ground Height: 48.4m AOD
 Viewpoint Grid Reference: 568011E, 172014N

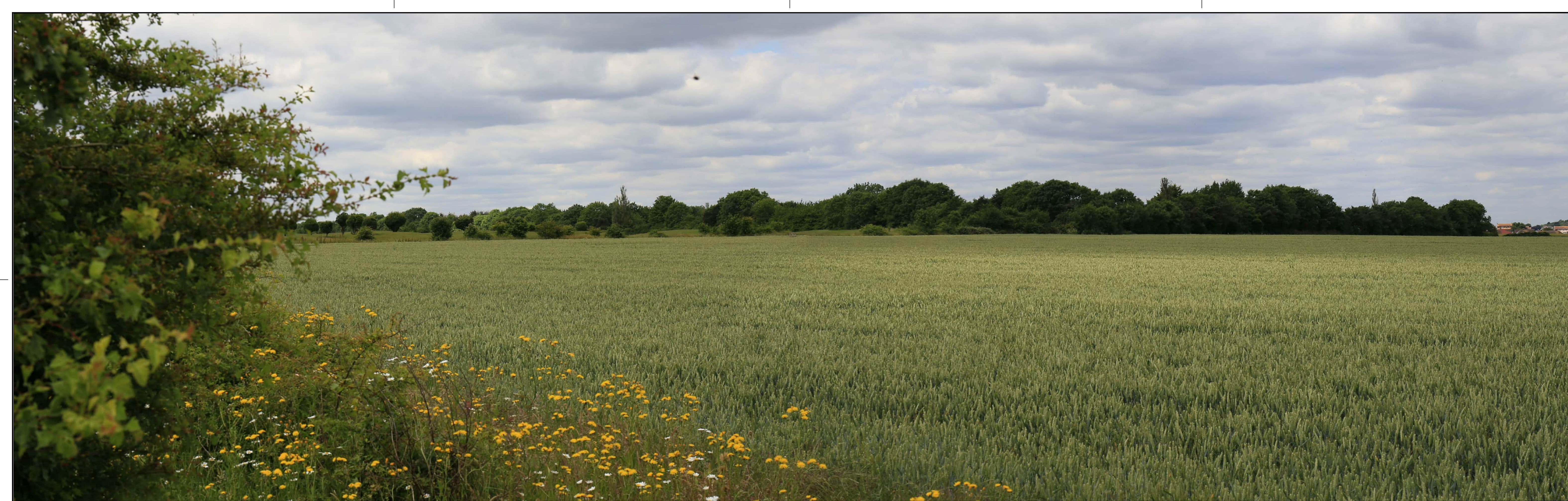
Distance to Order Limits: 0m
 View Direction (Centre of View): NW
 GPS Accuracy: 5m



LOWER THAMES CROSSING
 5th Floor Beaufort House
 15 St Botolph Street
 London EC3A 7DT

Project: LOWER THAMES CROSSING
 Drawing title: Figure 7.19
 Photomontage - Viewpoint S-33
 Winter Year 1
 Sheet 2 of 4

Drawn	BB	Date - 14/07/2023	Status	S9	Revision	P02.1
Checked	HP	Date - 14/07/2023	Application Document No. TR010032/APP/6.2			
Approved	BF	Date - 14/07/2023	Drawing number			
HE540039-CJV-ELS-SZP_ZZ000000_Z-DR-LV-00320						



Rev	Status	Rev. Date	Purpose of revision	Drawn	Chck'd	Apprv'd
P01	S8	05/08/2022	First Issued	BB	HP	SK

For location see Figure 7.16 - Visual Effects Drawing with Representative Viewpoint and Photomontage Locations

Camera: Canon EOS 6D MkII
 Lens: Canon EF 50mm f/1.8 STM
 Equipment: Manfrotto MA 454 Micro Positioning Plate
 Manfrotto SBH-100 Ball Head

Visualisation Type: Type 3
 Projection Type: Cylindrical
 Enlargement Factor: 1.5
 Horizontal FOV: 56.5°

Summer Viewpoint: S-33
 Date and Time: 13/06/2022 10:43

FL, Max Aperture: 50mm, 1.75
 Tripod Height: 1.5m
 Viewpoint Ground Height: 48.4m AOD
 Viewpoint Grid Reference: 568011E, 172014N

Distance to Order Limits: 0m
 View Direction (Centre of View): NW
 GPS Accuracy: 5m



Client
LOWER THAMES CROSSING
 5th Floor Beaufort House
 15 St Botolph Street
 London EC3A 7DT

Project LOWER THAMES CROSSING
 Drawing title Figure 7.19
 Baseline Photography - Viewpoint S-33
 Summer Year 15
 Sheet 3 of 4

Drawn	BB	Date - 05/08/2022	Status	S8	Revision	P01
Checked	HP	Date - 05/08/2022	Application Document No.	TR010032/APP/6.2		
Approved	SK	Date - 05/08/2022	Drawing number	HE540039-CJV-ELS-SZP_ZZ000000_Z-DR-LV-00321A		



P02.1	S9	14/07/2023	Deadline 1	BB	HP	BF
P01	S8	05/08/2022	First Issued	BB	HP	SK
Rev	Status	Rev. Date	Purpose of revision	Drawn	Chck'd	Apprv'd

For location see Figure 7.16 - Visual Effects Drawing with Representative Viewpoint and Photomontage Locations		Summer Viewpoint:	S-33
		Date and Time:	13/06/2022 10:43
Camera:	Canon EOS 6D MkII	Visualisation Type:	Type 3
Lens:	Canon EF 50mm f/1.8 STM	Projection Type:	Cylindrical
Equipment:	Manfrotto MA 454 Micro Positioning Plate	Enlargement Factor:	1.5
	Manfrotto SBH-100 Ball Head	Horizontal FOV:	56.5°
FL, Max Aperture:	50mm, 1.75	Distance to Order Limits:	0m
Tripod Height:	1.5m	View Direction	NW
Viewpoint Ground Height:	48.4m AOD	(Centre of View):	
Viewpoint Grid Reference:	568011E, 172014N	GPS Accuracy:	5m



LOWER THAMES CROSSING
 5th Floor Beaufort House
 15 St Botolph Street
 London EC3A 7DT

Project	LOWER THAMES CROSSING
Drawing title	Figure 7.19 Photomontage - Viewpoint S-33 Summer Year 15 Sheet 3 of 4

Drawn	BB	Date - 14/07/2023	Status	S9	Revision	P02.1
Checked	HP	Date - 14/07/2023	Application Document No. TR010032/APP/6.2			
Approved	BF	Date - 14/07/2023	Drawing number			
HE540039-CJV-ELS-SZP_ZZ000000_Z-DR-LV-00321						



P01	S8	05/08/2022	First Issued	BB	HP	SK
Rev	Status	Rev. Date	Purpose of revision	Drawn	Chck'd	Apprv'd

For location see Figure 7.16 - Visual Effects Drawing with Representative Viewpoint and Photomontage Locations		Summer Viewpoint:	S-33				
		Date and Time:	13/06/2022 10:43				
Camera:	Canon EOS 6D MkII	Visualisation Type:	Type 3	FL, Max Aperture:	50mm, 1.75	Distance to Order Limits:	0m
Lens:	Canon EF 50mm f/1.8 STM	Projection Type:	Cylindrical	Tripod Height:	1.5m	View Direction	NW
Equipment:	Manfrotto MA 454 Micro Positioning Plate	Enlargement Factor:	1.5	Viewpoint Ground Height:	48.4m AOD	(Centre of View):	
	Manfrotto SBH-100 Ball Head	Horizontal FOV:	56.5°	Viewpoint Grid Reference:	568011E, 172014N	GPS Accuracy:	5m

Client

LOWER THAMES CROSSING
 5th Floor Beaufort House
 15 St Botolph Street
 London EC3A 7DT

Project	LOWER THAMES CROSSING
Drawing title	Figure 7.19 Baseline Photography - Viewpoint S-33 Summer Year 15 Sheet 4 of 4

Drawn	BB	Date - 05/08/2022	Status	S8	Revision	P01
Checked	HP	Date - 05/08/2022				
Approved	SK	Date - 05/08/2022	Application Document No. TR010032/APP/6.2			
Drawing number		HE540039-CJV-ELS-SZP_ZZ000000_Z-DR-LV-00322A				



P02.1	S9	14/07/2023	Deadline 1	BB	HP	BF
P01	S8	05/08/2022	First Issued	BB	HP	SK
Rev	Status	Rev. Date	Purpose of revision	Drawn	Chck'd	Apprv'd

For location see Figure 7.16 - Visual Effects Drawing with Representative Viewpoint and Photomontage Locations

Camera: Canon EOS 6D MkII
 Lens: Canon EF 50mm f/1.8 STM
 Equipment: Manfrotto MA 454 Micro Positioning Plate
 Manfrotto SBH-100 Ball Head

Summer Viewpoint: S-33
 Date and Time: 13/06/2022 10:43

Visualisation Type: Type 3
 Projection Type: Cylindrical
 Enlargement Factor: 1.5
 Horizontal FOV: 56.5°

FL, Max Aperture: 50mm, 1.75
 Tripod Height: 1.5m
 Viewpoint Ground Height: 48.4m AOD
 Viewpoint Grid Reference: 568011E, 172014N

Distance to Order Limits: 0m
 View Direction (Centre of View): NW
 GPS Accuracy: 5m



LOWER THAMES CROSSING
 5th Floor Beaufort House
 15 St Botolph Street
 London EC3A 7DT

Project: LOWER THAMES CROSSING
 Drawing title: Figure 7.19
 Photomontage - Viewpoint S-33
 Summer Year 15
 Sheet 4 of 4

Drawn	BB	Date - 14/07/2023	Status	Revision
Checked	HP	Date - 14/07/2023	S9	P02.1
Approved	BF	Date - 14/07/2023	Application Document No. TR010032/APP/6.2	
Drawing number		HE540039-CJV-ELS-SZP_ZZ000000_Z-DR-LV-00322		



Rev	Status	Rev. Date	Purpose of revision	Drawn	Chck'd	Apprv'd
P01	S8	05/08/2022	First Issued	BB	HP	SK

For location see Figure 7.16 - Visual Effects Drawing with Representative Viewpoint and Photomontage Locations

Winter Viewpoint: Date and Time:	S-38b 05/04/2022 14:19	Visualisation Type: Projection Type: Enlargement Factor: Horizontal FOV:	Type 3 Cylindrical 1.5 56.5°	FL, Max Aperture: Tripod Height: Viewpoint Ground Height: Viewpoint Grid Reference:	50mm, 1.75 1.5m 2.5m AOD 569153E, 174803N	Distance to Order Limits: View Direction (Centre of View): GPS Accuracy:	1210m SW 5m
--	---------------------------	---	---------------------------------------	--	--	---	-------------------

Client

LOWER THAMES CROSSING
5th Floor Beaufort House
15 St Botolph Street
London EC3A 7DT

Project	LOWER THAMES CROSSING
Drawing title	Figure 7.19 Baseline Photography - Viewpoint S-38b Winter Year 1 Sheet 1 of 2

Drawn	BB	Date - 05/08/2022	Status	S8	Revision	P01
Checked	HP	Date - 05/08/2022	Application Document No. TR010032/APP/6.2			
Approved	SK	Date - 05/08/2022	Drawing number			
HE540039-CJV-ELS-SZP_ZZ000000_Z-DR-LV-00323A						



P02.1	S9	14/07/2023	Deadline 1	BB	HP	BF
P01	S8	05/08/2022	First Issued	BB	HP	SK
Rev	Status	Rev. Date	Purpose of revision	Drawn	Chck'd	Apprv'd

For location see Figure 7.16 - Visual Effects Drawing with Representative Viewpoint and Photomontage Locations

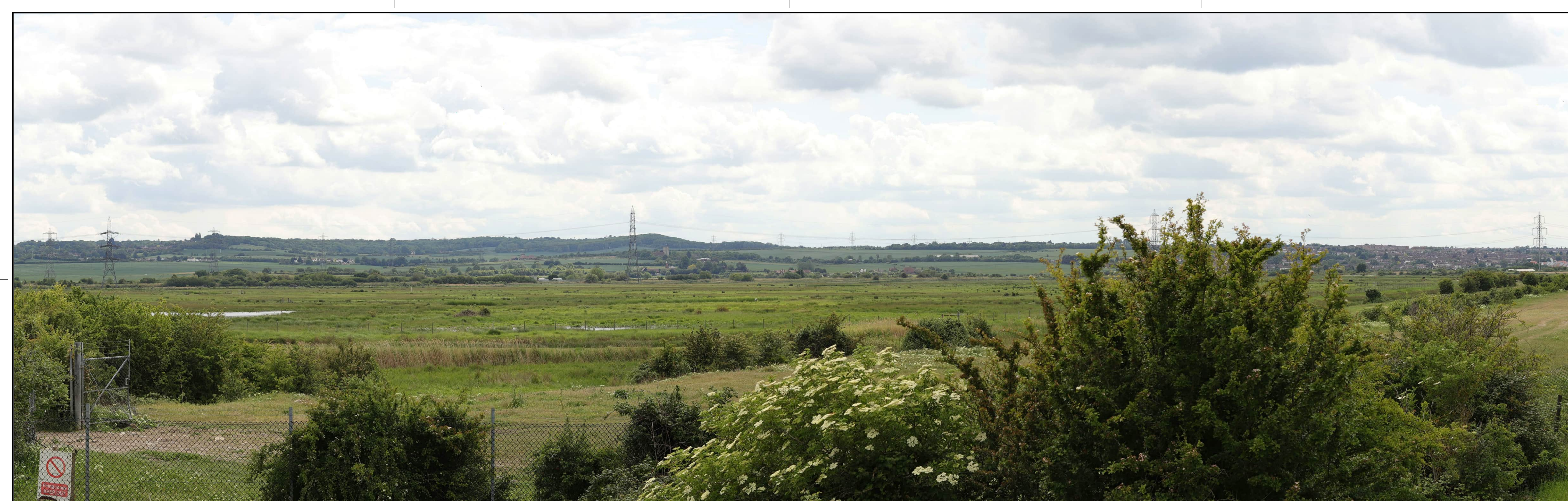
Winter Viewpoint:	S-38b	05/04/2022 14:19	
Camera:	Canon EOS 6D MkII	Type 3	
Lens:	Canon EF 50mm f/1.8 STM	Cylindrical	
Equipment:	Manfrotto MA 454 Micro Positioning Plate	Projection Type:	
	Manfrotto SBH-100 Ball Head	Enlargement Factor:	
		Horizontal FOV:	
FL, Max Aperture:	50mm, 1.75	Distance to Order Limits:	1210m
Tripod Height:	1.5m	View Direction	(Centre of View): SW
Viewpoint Ground Height:	2.5m AOD	View Direction	(Centre of View): SW
Viewpoint Grid Reference:	569153E, 174803N	GPS Accuracy:	5m



LOWER THAMES CROSSING
 5th Floor Beaufort House
 15 St Botolph Street
 London EC3A 7DT

Project	LOWER THAMES CROSSING
Drawing title	Figure 7.19 Photomontage - Viewpoint S-38b Winter Year 1 Sheet 1 of 2

Drawn	BB	Date - 14/07/2023	Status	S9	Revision	P02.1
Checked	HP	Date - 14/07/2023	Application Document No. TR010032/APP/6.2			
Approved	BF	Date - 14/07/2023	Drawing number			
HE540039-CJV-ELS-SZP_ZZ000000_Z-DR-LV-00323						



P01	S8	05/08/2022	First Issued	BB	HP	SK
Rev	Status	Rev. Date	Purpose of revision	Drawn	Chck'd	Apprv'd

For location see Figure 7.16 - Visual Effects Drawing with Representative Viewpoint and Photomontage Locations		Summer Viewpoint:	S-38b				
		Date and Time:	28/05/2019 14:10				
Camera:	Canon EOS 6D MkII	Visualisation Type:	Type 3	FL, Max Aperture:	50mm, 1.75	Distance to Order Limits:	1210m
Lens:	Canon EF 50mm f/1.8 STM	Projection Type:	Cylindrical	Tripod Height:	1.5m	View Direction	(Centre of View): SW
Equipment:	Manfrotto MA 454 Micro Positioning Plate	Enlargement Factor:	1.5	Viewpoint Ground Height:	2.5m AOD	GPS Accuracy:	5m
	Manfrotto SBH-100 Ball Head	Horizontal FOV:	56.5°	Viewpoint Grid Reference:	569153E, 174803N		



LOWER THAMES CROSSING
 5th Floor Beaufort House
 15 St Botolph Street
 London EC3A 7DT

Project	LOWER THAMES CROSSING
Drawing title	Figure 7.19 Baseline Photography - Viewpoint S-38b Summer Year 15 Sheet 2 of 2

Drawn	BB	Date - 05/08/2022	Status	Revision
Checked	HP	Date - 05/08/2022	S8	P01
Approved	SK	Date - 05/08/2022	Application Document No. TR010032/APP/6.2	
Drawing number		HE540039-CJV-ELS-SZP_ZZ000000_Z-DR-LV-00324A		



P02.1	S9	14/07/2023	Deadline 1	BB	HP	BF
P01	S8	05/08/2022	First Issued	BB	HP	SK
Rev	Status	Rev. Date	Purpose of revision	Drawn	Chck'd	Apprv'd

For location see Figure 7.16 - Visual Effects Drawing with Representative Viewpoint and Photomontage Locations		Summer Viewpoint:	S-38b				
		Date and Time:	28/05/2019 14:10				
Camera:	Canon EOS 6D MkII	Visualisation Type:	Type 3	FL, Max Aperture:	50mm, 1.75	Distance to Order Limits:	1210m
Lens:	Canon EF 50mm f/1.8 STM	Projection Type:	Cylindrical	Tripod Height:	1.5m	View Direction	(Centre of View): SW
Equipment:	Manfrotto MA 454 Micro Positioning Plate	Enlargement Factor:	1.5	Viewpoint Ground Height:	2.5m AOD	View Direction	(Centre of View): SW
	Manfrotto SBH-100 Ball Head	Horizontal FOV:	56.5°	Viewpoint Grid Reference:	569153E, 174803N	GPS Accuracy:	5m



LOWER THAMES CROSSING
 5th Floor Beaufort House
 15 St Botolph Street
 London EC3A 7DT

Project	LOWER THAMES CROSSING
Drawing title	Figure 7.19 Photomontage - Viewpoint S-38b Summer Year 15 Sheet 2 of 2

Drawn	BB	Date - 14/07/2023	Status	S9	Revision	P02.1
Checked	HP	Date - 14/07/2023	Application Document No. TR010032/APP/6.2			
Approved	BF	Date - 14/07/2023	Drawing number			
HE540039-CJV-ELS-SZP_ZZ000000_Z-DR-LV-00324						

If you need help accessing this or any other National Highways information, please call **0300 123 5000** and we will help you.

© Crown copyright 2023.

You may re-use this information (not including logos) free of charge in any format or medium, under the terms of the Open Government Licence. To view this licence:

visit www.nationalarchives.gov.uk/doc/open-government-licence/

write to the **Information Policy Team, The National Archives, Kew, London TW9 4DU**, or email psi@nationalarchives.gsi.gov.uk.

Mapping (where present): © Crown copyright and database rights 2023 OS 100030649. You are permitted to use this data solely to enable you to respond to, or interact with, the organisation that provided you with the data. You are not permitted to copy, sub-license, distribute or sell any of this data to third parties in any form.

If you have any enquiries about this publication email info@nationalhighways.co.uk or call **0300 123 5000***.

*Calls to 03 numbers cost no more than a national rate call to an 01 or 02 number and must count towards any inclusive minutes in the same way as 01 and 02 calls. These rules apply to calls from any type of line including mobile, BT, other fixed line or payphone. Calls may be recorded or monitored.

Printed on paper from well-managed forests and other controlled sources when issued directly by National Highways.

Registered office Bridge House, 1 Walnut Tree Close, Guildford GU1 4LZ

National Highways Company Limited registered in England and Wales number 09346363